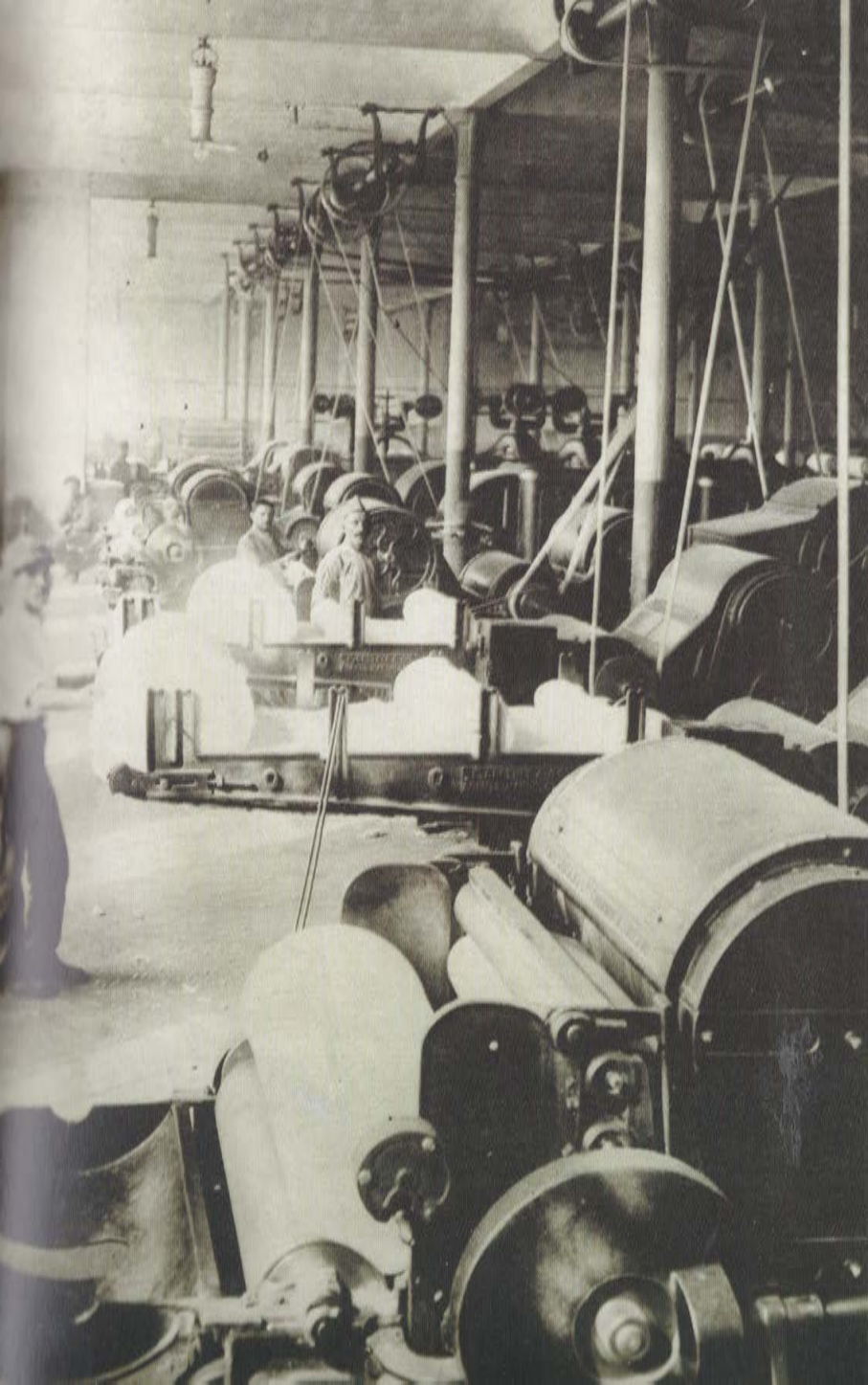
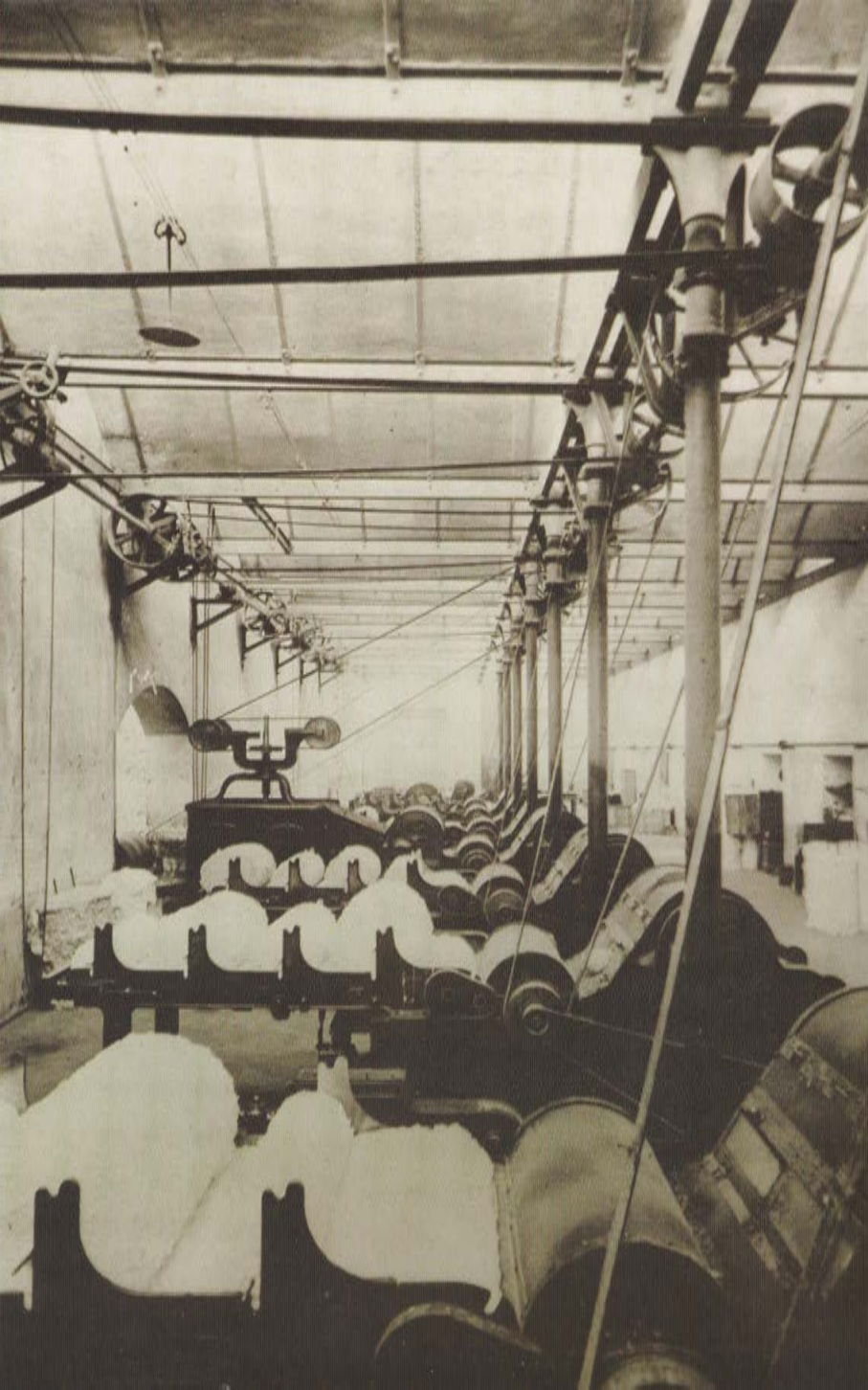


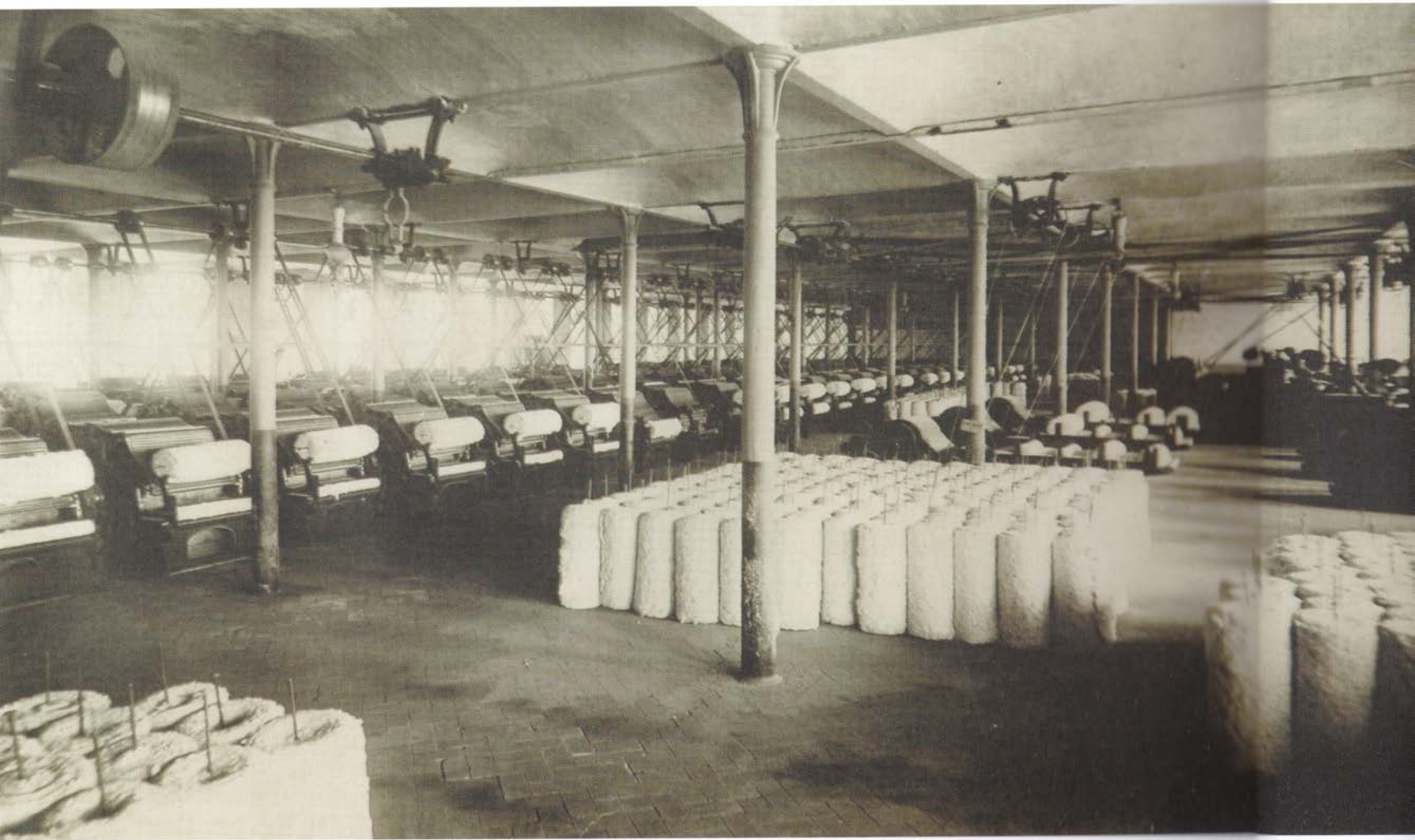
Gli impianti di Nocera

- 1 Opificio MCM - Locale cardatura Nocera Inf. 1918-20
- 2 Opificio MCM - Locale cardatura Nocera Inf. 1918-20
- 3 Opificio MCM - Battitoi Nocera Inf. 1918-20
- 4 Opificio Aselmeyer - materassi di cotone pronti per la cardatura Nocera Inf. 1910
- 5 Opificio Aselmeyer - cardatrici Nocera Inf. 1910
- 6 Opificio MCM - filatoi ring Nocera Inf. 1930
- 7 Opificio MCM- filatoio intermittente "spinning Jenny" Nocera Inf. 1920-25
- 8 Opificio MCM- filatoio intermittente "spinning Jenny" Nocera Inf. 1920-25

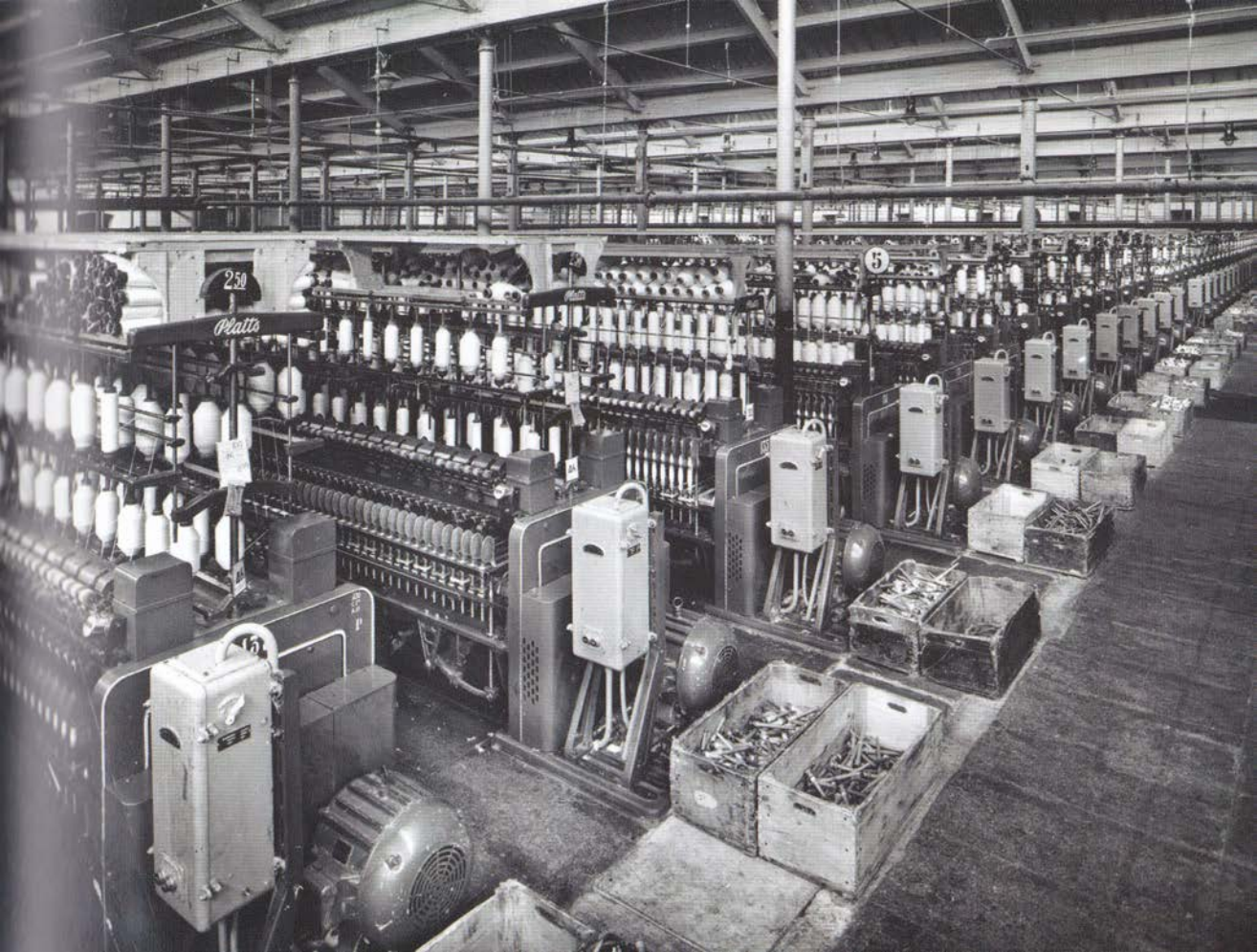


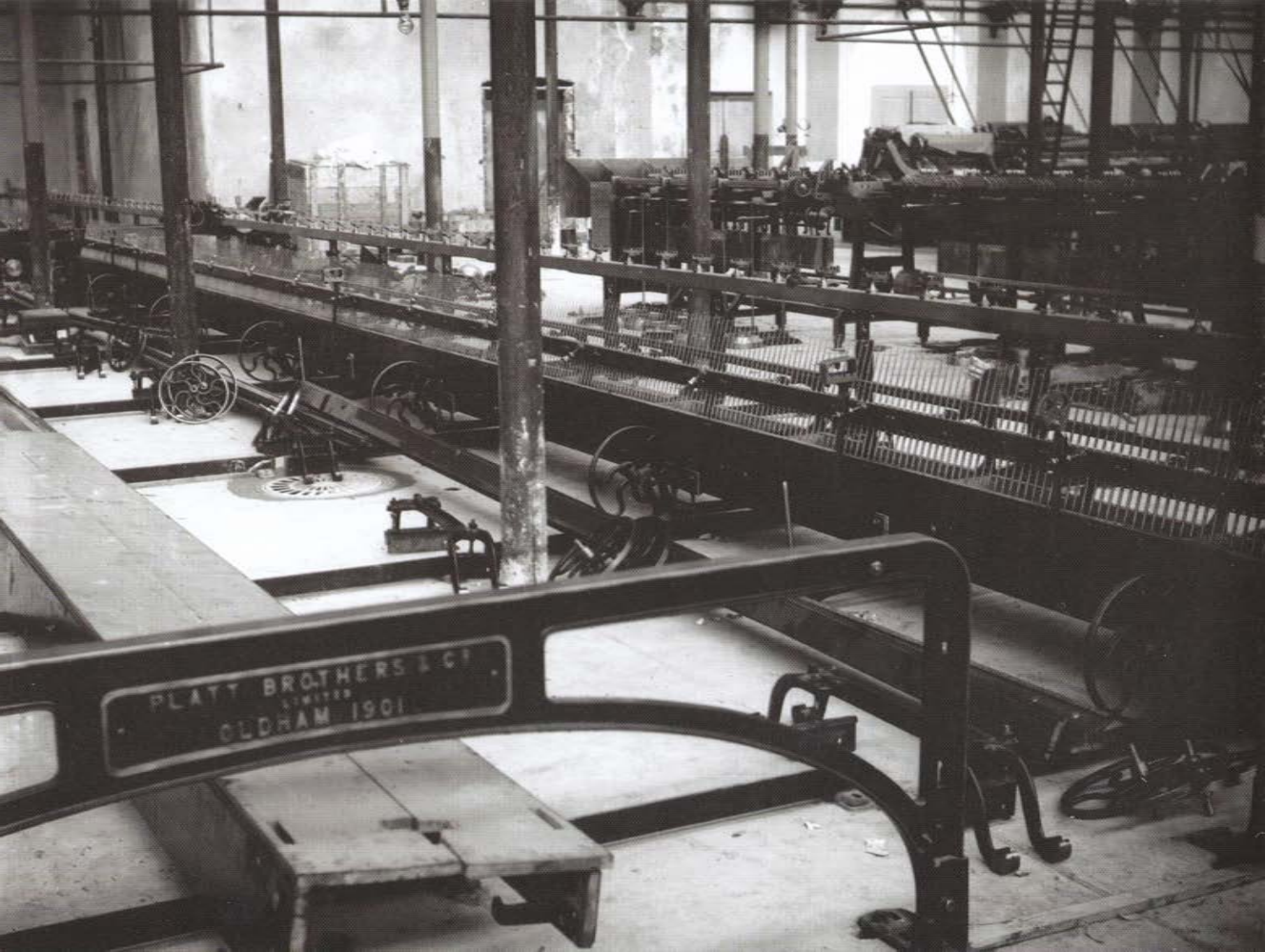












PLATT BROTHERS & CO
LIMITED
OLDHAM 1901



